

## HIGHLIGHTS FROM FEMA REPORT VS WILLOWBROOK AND

### FEMA PICTURES - Lack of adequate connections

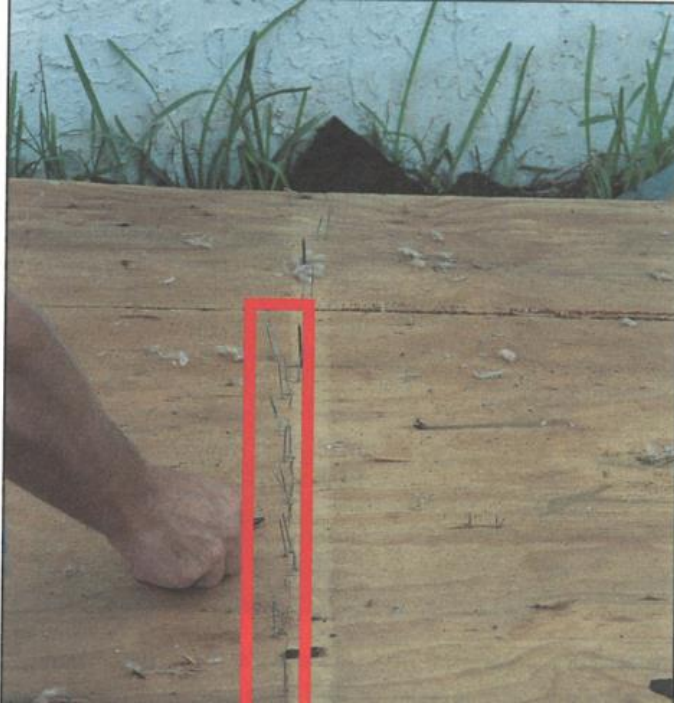


FIGURE 11.  
*Roof sheathing found in debris. Staples were off-line and therefore not connected to supporting truss top chord.*



FIGURE 10. *Top plate splice not able to transfer horizontal loads.*

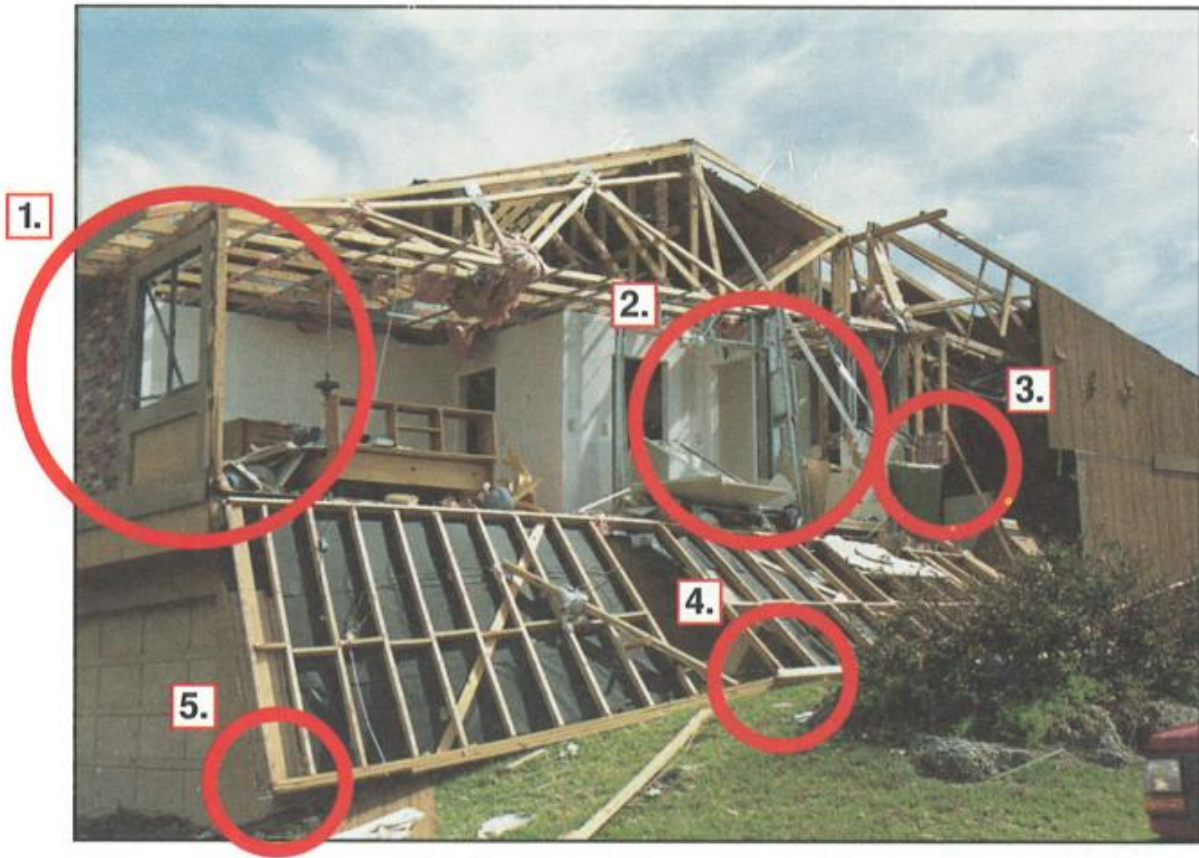


FIGURE 9. *Failure of non-loadbearing wall. Connections of exterior wall were not adequate.*

*Key:*

- 1. End column separated from roof.*
- 2. Load transfer from outside wall to interior shear wall inadequate.*
- 3. Beam separated from beam seat/connector.*
- 4. Improperly spliced composite tie-beam/connector.*
- 5. End of top plate connection inadequate.*





FIGURE 15. *Masonry construction building. Wall separated from building envelope due to inadequate vertical wall reinforcing in connection to horizontal tie-beam.*



FIGURE 14. *Roof structure failure due to inadequate bracing.*



*Exterior wood-frame non-loadbearing wall. Transfer of wind forces from wall to adjoining structure was not sufficient.*



**FIGURE 5.**  
*End of exterior non-loadbearing wall top plate. Transfer of forces on entire wall depended on a limited number of nails.*







FIGURE 6. Entire wood gable separation. Bracing connection, if completed, may have prevented this from occurring.

**WILLOWBROOK BELOW**







**CARRIAGE LAKE - MISSING STRAPS?**









**Is this one above built correctly? Lots of straps**

### **POINTE WEST – VERO BEACH**



